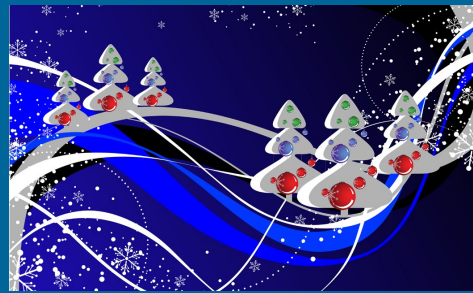




# CHRISTMAS FAYRE




Our Christmas Fayre is a lovely traditional way to enter the festive season and it's also one of our largest fund-raising activities of the school year. You can do some Christmas shopping and enjoy carols and a mince pie while the children are occupied with fun games, entertainment and a visit by a very special bearded guest.

Please help us to continue our record of hugely successful events by supporting us in any way that you can. **We can only do it with your help.**

 **Infants & Juniors- Beakerbola.** Please fill a plastic beaker (or 2 or 3!) with wrapped sweets, chocolates, small toys and/or novelties. You'll be given the beaker and we'll have spares available in the school office if you'd like more. Please decorate your beaker and don't forget to cover it with foil or cling film. Beakers should be left in the Friends box in the school office or outside our cupboard by Monday 28th November. Don't forget to complete the form with your details so that you can receive 1 house point per beaker.

 **Seniors-Hamper items** We need luxury items such as toiletries, chocolates or Christmas fayre which we can use to put into hampers. Why not raid the cupboards (with parents' permission) to see if you have any unwanted, unopened, still-in-date gifts? Please leave all donations in the Friends box in the office or by the Friends cupboard in Hillingdon House. Any alcoholic donations must be brought to the office by parents. Don't forget to include your name, class and house to receive 1 house point per donation.

**The house to collect the most house points will earn an extra 50 housepoints!**

 **Everyone- Raffle prizes** We'd really appreciate good quality items from individuals, families or companies. Get your company logo in the brochure in return. Please leave items in the office or contact us with details.

**Come along** Bring family and friends to enjoy the afternoon and spend their money!

**Volunteers** An hour or two is all we need. Why not sign up with a friend?

For questions or offers of help please 'phone Mandy Winter on  
07789 208559

or email at [stnicholasfriends@ntlworld.com](mailto:stnicholasfriends@ntlworld.com)



**3RD DECEMBER**  
**12-3PM**



The  
**Friends**  
Saint Nicholas School

# Win £10!

## Poster Competition

### Design a poster to promote our Christmas Fayre

#### How to enter:

- \* Produce an A4 size poster, either on the computer or by hand
- \* Put your name, class and phone number on the back
- \* Leave in box outside Friends' cupboard in Hillingdon House entrance by Fri 4th Nov
- \* £10 voucher to spend at the Fayre for the winning Infant, Junior and Senior entrants

#### Remember to include:

- \* Donations we need
  - \* Beakers filled with sweets & small toys
  - \* Luxury items for hampers (eg chocolates, toiletries, Christmas food)
  - \* Raffle items
- \* What's on at the Fayre
  - \* Santa's grotto
  - \* Kids' games and crafts
  - \* New SnowDive! Game
  - \* Stall holders offering wide range of gifts
  - \* Christmas carolsingers
- \* Festive food
  - \* Mulled wine and mince pies
  - \* BBQ
  - \* Cakes and hot drinks

**DEADLINE: 4TH NOV**

The  
**Friends**  
Saint Nicholas School